

Daikin air conditioners for your home

WALL MOUNTED UNIT



www.daikineurope.com

FTKS/FTXS-C/B



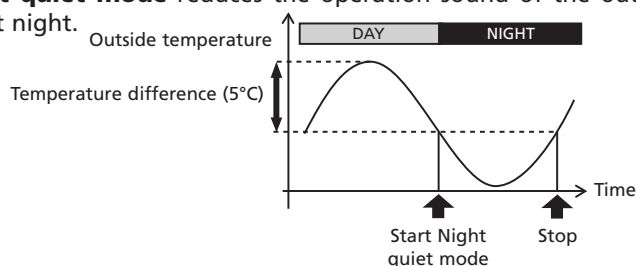


Daikin air conditioners lead the industry with their energy savings and wide model range. These B en C-series offer you a flat panel design with high performances and great energy efficiency.



COMFORT

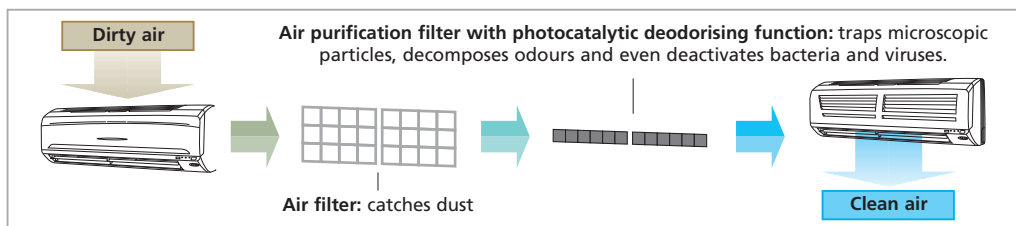
- The **vertical auto swing** automatically moves the flaps up and down to ensure an even distribution of air throughout the room.
- The **horizontal auto swing** automatically moves the louvers to the left and right to cover the room with cool/warm air (only B-series).
- The **3D air flow** function combines the 'vertical' and 'horizontal' auto swing to circulate a stream of cool/warm air right to the corners of even large spaces (only B-series).
- You have the choice out of **5 fan speed steps** to select: from high to super low.
- Daikin's special **dry programme** reduces humidity in the room without variations in room temperature.
- The **powerful operation function** boosts the air flow to a maximum volume for a 20-minute period, (e.g. when you come home on a hot day, rapid cooling is required). After this, the unit automatically returns to its previous settings.
- The **night set mode** is automatically selected by pressing the 'off' timer button. This function prevents any sudden change in room temperature by gently raising/lowering the temperature before the air conditioner stops, so you can sleep more comfortably.
- These indoor units are **extremely quiet in operation**. The sound levels are as low 22dB(A), comparable to rustling leaves.
The **outdoor unit silent operation** function brings you comfort by automatically lowering the operation sound of the outdoor unit with 3dB(A).
- The **night quiet mode** reduces the operation sound of the outdoor unit by another 3 dB(A) at night.





FILTER

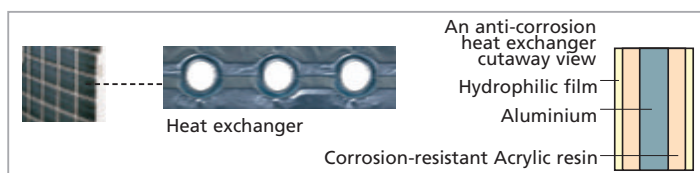
- This wall mounted unit is equipped with an **air purification filter with photocatalytic deodorising function**. The filter is able to trap microscopic particles, to decompose odours, and even to remove bacteria and to deactivate viruses. The filter lasts for 3 years without replacement if washed about every 6 months.



FLEXIBLE INSTALLATION AND EASY TO USE AND MAINTAIN

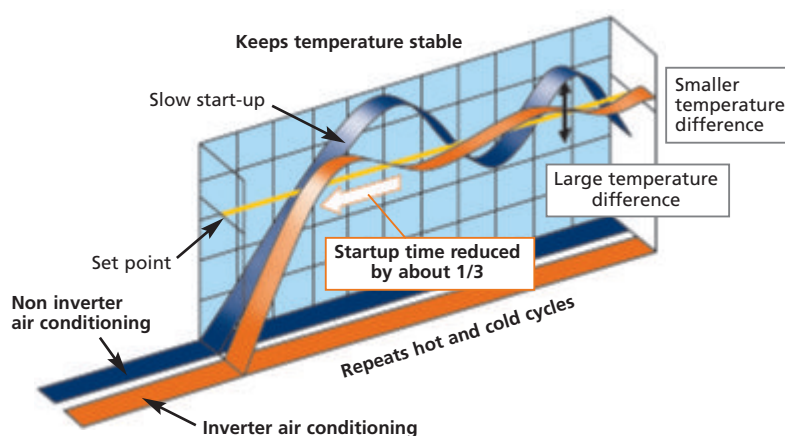
- The outdoor unit can be installed on a roof or terrace or placed against an outside wall.
- Daikin remote controls give you **easy control at your fingertips**.
- Malfunction codes are shown on the digital display panel of the infrared remote control for **fast and easy maintenance**
- Special anti-corrosion treatment of the outdoor unit's heat exchanger fin, gives **great resistance against acid rain and salt corrosion**.

Additional resistance is provided by a rust proof steel sheet on the underside of the unit.



ENERGY EFFICIENT

- Energy label: up to class A
- Inverter technology**
Improved energy efficiency:
The use of integrated inverter control ensures maximum **energy efficiency** by supplying only the required heating or cooling load where a standard non inverter unit would supply maximum load in an on/off regime.

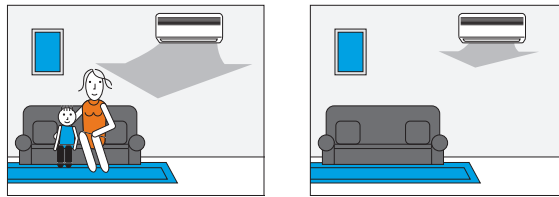


Infrared remote control
(20,25,35 class) (50,60,71 class)

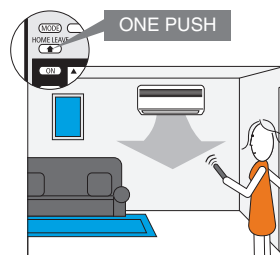
Improved comfort:

The quicker start up time enabled by the inverter increases the comfort by reducing the lead time in obtaining the required indoor temperature while once the required temperature reached, the inverter unit continuously scans the room for small changes and adjusts the room temperature in seconds and thus increasing the comfort again.

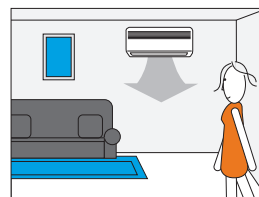
- The **movement sensor** detects whether someone is in the room. When the room is empty, the unit switches to economy mode after 20 minutes and restarts when a person enters the room.



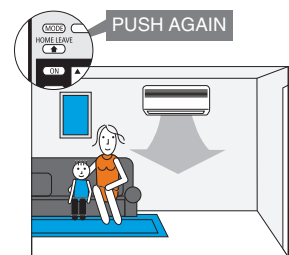
- The **home leave operation** function prevents large temperature differences by continuously operating at a minimum (heating mode) or maximum (cooling mode) preset level while you're out or sleeping. It also allows the indoor temperature to return quickly to your favorite comfort level.



When you go out push the "Home leave operation" button, and the air conditioner will adjust capacity to reach the preset temperature for "Home leave operation".



When you return, you will be welcomed by a comfortable air-conditioned room.



Push the "Home leave operation" button again, and the air conditioner will adjust capacity to the set temperature for normal operation.

APPLICATION OPTIONS

- This model can be used both in cooling only or heating.
- It is possible to use the indoor unit in pair (connecting one indoor to one outdoor) and multi applications (connecting up to 9 units in several rooms to 1 outdoor unit).



Capacity and power input

COOLING ONLY - INVERTER CONTROLLED (air cooled)				FTKS20CVMB RKS20DVMB	FTKS25CVMB RKS25DVMB	FTKS35CVMB RKS35DVMB	FTKS50BVMB RKS50BVMB9	FTKS60BVMB RKS60BVMB9	FTKS71BVMB RKS71BVMB9
Cooling capacity	min~nom~max	kW		1.3~2.0~2.6	1.3~2.5~3.0	1.4~3.4~3.8	0.90~5.00~5.80	0.90~6.00~6.70	0.90~7.10~8.00
Nominal input	min~nom~max	kW		0.30~0.50~0.98	0.30~0.695~0.98	0.30~1.06~1.30	0.45~1.66~2.30	0.45~2.12~2.45	0.45~2.53~3.07
EER				4.00	3.60	3.21	3.01	2.83	2.81
Energy label				A	A	A	B	C	C
Annual energy consumption	cooling	kWh		250	348	530	830	1,060	1,265
HEAT PUMP - INVERTER CONTROLLED (air cooled)				FTXS20CVMB RXS20DVMB	FTXS25CVMB RXS25DVMB	FTXS35CVMB RXS35DVMB	FTXS50BVMB RXS50BVMB	FTXS60BVMB RXS60BVMB	FTXS71BVMB RXS71BVMB
Cooling capacity	min~nom~max	kW		1.3~2.0~2.6	1.3~2.5~3.0	1.4~3.4~3.8	0.90~5.00~5.80	0.90~6.00~6.70	0.90~7.10~8.00
Heating capacity	min~nom~max	kW		1.3~2.7~4.5	1.3~3.4~4.5	1.4~4.0~5.0	0.90~5.80~7.50	0.90~7.00~8.00	0.90~8.50~9.50
Nominal input	cooling	min~nom~max	kW	0.30~0.50~0.98	0.30~0.695~0.98	0.30~1.06~1.30	0.45~1.66~2.30	0.45~2.12~2.45	0.45~2.53~3.07
	heating	min~nom~max	kW	0.29~0.675~1.48	0.29~0.935~1.46	0.31~1.17~1.59	0.45~1.70~2.58	0.45~2.09~3.10	0.45~2.63~3.80
EER				4.00	3.60	3.21	3.01	2.83	2.81
COP				4.00	3.64	3.42	3.41	3.35	3.23
Energy label	cooling			A	A	A	B	C	C
	heating			A	A	B	B	C	C
Annual energy consumption	cooling	kWh		250	348	530	830	1,060	1,265

Note : 1) Energy label: scale from A (most efficient) to G (less efficient)

2) The energy label Directive 2002/31/EC will enter into force once the relevant measurement standard will be published in the European Official Standard.

3) Annual energy consumption: based on average use of 500 running hours per year at full load (=nominal conditions)

MULTI - COOLING ONLY	Max. n° of indoor units	Max. cooling capacities (kW)	Max. PI cooling (kW)		
2MKS40D	2	4.20	1.52		
3MKS50D	3	6.46	2.25		
4MKS58D	4	6.60	2.47		
4MKS75D	4	9.27	3.71		
4MKS90D	4	9.86	3.52		
MULTI - HEAT PUMP	Max. n° of indoor units	Max. cooling capacities (kW)	Max. PI cooling (kW)	Max. heating capacities (kW)	Max. PI heating (kW)
2MXS40D*	2	4.20	1.52	4.70	1.87
2MXS52D*	2	6.50	2.69	7.34	2.42
3MXS52D*	3	6.50	2.69	7.34	2.42
4MXS68D*	4	8.68	3.69	10.64	3.41
4MXS80D*	4	9.49	3.34	11.00	3.52
SUPER MULTI PLUS	Max. n° of indoor units	Max. cooling capacities (kW)	Max. PI cooling (kW)	Max. heating capacities (kW)	Max. PI heating (kW)
RMXS112D*	7	11.20	3.57	12.50	4.01
RMXS140D*	8	14.00	5.23	16.00	5.31
RMXS160D*	9	15.50	5.55	17.50	5.56

Notes:

- For more detailed information about specifications, capacities, power input, energy labelling and annual energy consumption, please refer to our Multi Model catalogue/Super Multi Plus catalogue or check with your local dealer.

* At least 2 indoor units should be connected to a Multi outdoor unit.



Specifications indoor units

COOLING ONLY				FTKS20CVMB	FTKS25CVMB	FTKS35CVMB	FTKS50BVMB	FTKS60BVMB	FTKS71BVMB	
Dimensions		HxWxD	mm	273x784x195			290x795x238	290x1,050x238		
Weight			kg	7.5	7.5	7.5	9	12	12	
Colour				white						
Air flow rate		H/L	m³/min	7.7/4.2/3.6	7.7/4.2/3.6	7.7/4.4/3.8	11.4/8.0/7.1	16.2/11.4/10.2	16.7/11.6/10.6	
Fan speed				5 steps, silent and auto						
Sound pressure level		H/L	dB(A)	38/25/22	38/25/22	39/26/23	44/35/32	45/36/33	46/37/34	
Sound power level		H	dB(A)	56	56	57	63	63	63	
Piping connections		liquid	mm	ø6.4			ø6.4			
		gas	mm	ø9.5			ø12.7		ø15.9	
		drain	mm	ø18.0			ø18.0			
Heat insulation				both liquid and gas pipes						
HEAT PUMP				FTXS20CVMB	FTXS25CVMB	FTXS35CVMB	FTXS50BVMB	FTXS60BVMB	FTXS71BVMB	
Dimensions		HxWxD	mm	273x784x195			290x795x238	290x1,050x238		
Weight			kg	7.5	7.5	7.5	9	12	12	
Colour				white						
Air flow rate		cooling	H/L	m³/min	7.7/4.2/3.6	7.7/4.2/3.6	7.7/4.4/3.8	11.4/8.0/7.1	16.2/11.4/10.2	16.7/11.6/10.6
		heating	H/L	m³/min	7.8/5.3/4.6	7.8/5.3/4.6	8.1/5.3/4.6	12.6/8.9/7.7	17.4/12.7/11.4	18.5/13.5/12.1
Fan speed				5 steps, silent and auto						
Sound pressure level		cooling	H/L	dB(A)	38/25/22	38/25/22	39/26/23	44/35/32	45/36/33	46/37/34
		heating	H/L	dB(A)	38/28/25	38/28/25	39/29/26	42/33/30	44/35/32	46/37/34
Sound power level		cooling	H	dB(A)	56	56	57	63	63	63
		heating	H	dB(A)	56	56	57	60	62	63
Piping connections		liquid	mm	ø6.4			ø6.4			
		gas	mm	ø9.5			ø12.7		ø15.9	
		drain	mm	ø18.0			ø18.0			
Heat insulation				both liquid and gas pipes						

Indoor units: FTKS/FTXS-C/B



FTK/XS20,25,35C



FTK/XS50B



FTK/XS60,71B

Specifications outdoor units

COOLING ONLY				RKS20DVMB	RKS25DVMB	RKS35DVMB	RKS50BVMB9	RKS60BVMB9	RKS71BVMB9
Dimensions	HxWxD	mm	550x765x285			735x825x300			
Weight		kg	30	32	32	49	53	55	
Casing colour			ivory white			ivory white			
Sound pressure level	H/L	dB(A)	46/43	46/43	47/44	47/*	49/*	52/*	
Sound power level	H	dB(A)	61	61	62	63	64	66	
Compressor			hermetically sealed swing type			hermetically sealed swing type			
Refrigerant type			R-410A			R-410A			
Refrigerant charge		kg/m	0.02 (for piping length exceeding 10m)			0.02 (for piping length exceeding 10m)			
Maximum piping length		m	20			30			
Maximum level difference		m	15			20			
Operation range	from ~ to	°CDB	-10 ~ 46			-10 (-15**) ~ 46			
HEAT PUMP				RXS20DVMB	RXS25DVMB	RXS35DVMB	RXS50BVMB	RXS60BVMB	RXS71BVMB
Dimensions	HxWxD	mm	550x765x285			735x825x300			
Weight		kg	30	32	32	49	53	55	
Casing colour			ivory white			ivory white			
Sound pressure level	cooling	H/L	dB(A)	46/43	46/43	47/44	47/*	49/*	52/*
	heating	H/L	dB(A)	47/44	47/44	48/45	48/*	49/*	52/*
Sound power level	cooling	H	dB(A)	61	61	62	63	64	66
	heating	H	dB(A)	62	62	63	64	64	66
Compressor			hermetically sealed swing type			hermetically sealed swing type			
Refrigerant type			R-410A			R-410A			
Refrigerant charge		kg/m	0.02 (for piping length exceeding 10m)			0.02 (for piping length exceeding 10m)			
Maximum piping length		m	20			30			
Maximum level difference		m	15			20			
Operation range	cooling	from ~ to	°CDB	-10 ~ 46			-10 ~ 46		
	heating	from ~ to	°CWB	-15 ~ 20			-15 ~ 18		

* This information was not available at the time of publication

** Possibility to extend the operation range down to -15°C by turning ON the switch on the outdoor unit PCB. In this case, the unit will stop operation at -20°C or lower and will recover when temperature rises again.

Accessories: control systems

INDOOR UNITS		FTK/XS20C	FTK/XS25C	FTK/XS35C	FTK/XS50B	FTK/XS60B	FTK/XS71B
Wiring adapter for time clock/ remote control (1)	normal open contact				KRP413A1S		
	normal open pulse contact				KRP413A1S		
Centralised control board	up to 5 rooms (2)				KRC726		
Central remote control					DCS302C51		
Unified ON/OFF control					DCS301B51		
Schedule timer					DST301B51		
Interface adapter (3)					KRP928A2S		

(1) Wiring adapter is supplied by Daikin. Timer and other devices: field supply.

(2) Wiring adapter is also required for each indoor unit.

(3) For DIII-NET adapter

Accessories

INDOOR UNITS		FTK/XS20C	FTK/XS25C	FTK/XS35C	FTK/XS50B	FTK/XS60B	FTK/XS71B
Air purification filter with photocatalytic deodorising function (with frame)					KAF918A43		
Air purification filter with photocatalytic deodorising function (without frame)					KAF918A44		
Anti-theft protection for remote control					KKF917A4		

Accessories

OUTDOOR UNITS		RK/XS20D	RK/XS25D	RK/XS35D	RK/XS50B	RK/XS60B	RK/XS71B
Air direction adjustment grille			KPW937A4			KPW945A4	

Note: 1) VM = 1 ~ ,220 ~ 240/220-230V,50Hz/60Hz

2) Nominal cooling capacities are based on: indoor temperature 27°CDB/19°CWB • outdoor temperature 35°CDB • refrigerant piping length 75m • level difference 0m.

3) Nominal heating capacities are based on: indoor temperature 20°CDB • outdoor temperature 7°CDB/6°CWB • refrigerant piping length 75m • level difference 0m.

4) Capacities are net, including a deduction for cooling (an addition for heating) for indoor fan motor heat.

5) Units should be selected on nominal capacity. Max. capacity is limited to peak periods.

6) The sound pressure level is measured via a microphone at a certain distance from the unit (for measuring conditions: please refer to the technical databooks).

7) The sound power is an absolute value indicating the "power" which a sound source generates.





Daikin's unique position as a manufacturer of air conditioning equipment, compressors and refrigerants has led to its close involvement in environmental issues. For several years Daikin has had the intention to become a leader in the provision of environmental friendly products. This challenge demands the eco design and development of a wide range of products and an energy management system; which involves energy conservation and reduction of waste.



Daikin Europe N.V. is approved by LRQA for its Quality Management System in accordance with the ISO9001 standard. ISO9001 pertains to quality assurance regarding design, development, manufacturing as well as to services related to the product.



ISO14001 assures an effective environmental management system in order to help protect human health and the environment from the potential impact of our activities, products and services and to assist in maintaining and improving the quality of the environment.



Daikin units comply with the European regulations that guarantee the safety of the product.



Daikin Europe N.V. is participating in the EUROVENT Certification Programme. Products are as listed in the EUROVENT Directory of Certified Products. Multi units are Eurovent certified for combinations up to 2 indoor units.

Specifications are subject to change without prior notice.

Daikin products are distributed by:

DAIKIN EUROPE N.V.

Zandvoordestraat 300
B-8400 Oostende, Belgium
www.daikineurope.com